

KANSAS SECTION OF THE MAA

# KSMAA NEWS



VOLUME 12, ISSUE 2      FALL 2021

## SPRING 2022 MEETING INFORMATION

Assuming it will be safe to travel, current plans are to hold the 2022 KSMAA meeting at Benedictine College in Atchison, KS. The dates for the meeting are April 8-9, 2022. A map of the Benedictine College campus can be found at <https://www.benedictine.edu/about/interactive-map>.

More information on the spring KSMAA meeting and a call for contributed papers will be forthcoming. As information becomes available it will be posted on the section webpage at <https://www.kansas.maa.org/>.

The 16th Kansas Collegiate Math Competition will be held in conjunction with the meeting. For more information on the competition including questions and solutions from past years, visit <https://www.pittstate.edu/math/kansas-collegiate-mathematics-competition.html>.

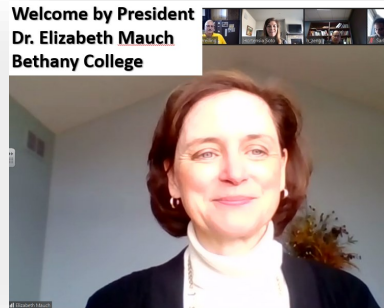


## 2021 KSMAA TEACHING AWARD

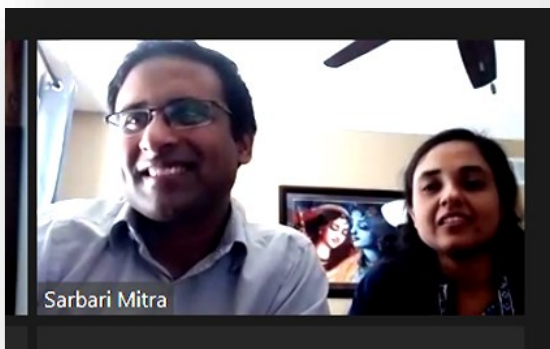
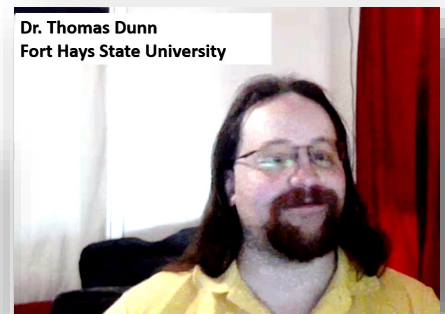
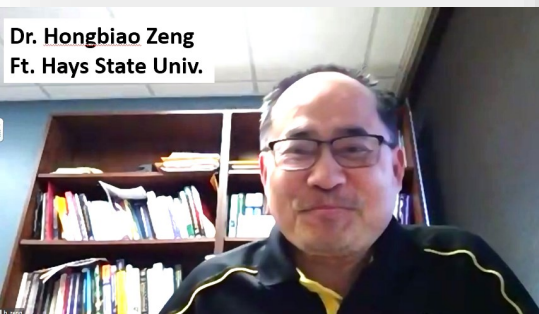
**Congratulations** to Virginia Naibo, Professor of Mathematics at Kansas State University, on receiving the 2021 MAA Kansas Section Award for Distinguished College or University Teaching. As a recipient of the section teaching award, Professor Naibo will be the 2022 KSMAA nominee for the national Deborah and Franklin Tepper Haimo Award for Distinguished College or University Teaching of Mathematics.

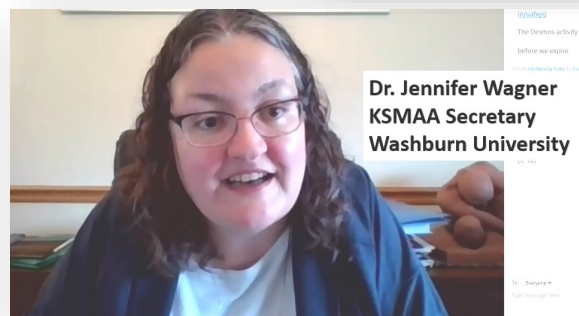


# PICTURES FROM THE 2021 KSMAA MEETING

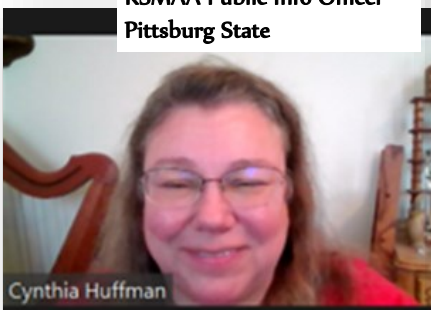


**Kyle Brinker, student  
Emporia State University**





**Dr. Cynthia Huffman**  
KSMAA Public Info Officer  
Pittsburg State



## A friendly reminder about a great classroom resource

[Convergence](#) is the MAA's free online journal about the history of mathematics and its use in teaching. Aimed at teachers of mathematics at both the secondary and collegiate levels, *Convergence* covers many topics from grades 8-16 mathematics: algebra, combinatorics, synthetic and analytic geometry, trigonometry, probability and statistics, elementary functions, calculus, differential equations, and linear algebra.

From one-minute warm-ups to classroom projects using primary sources, there are many interesting and fun resources on the Convergence website:

[On This Day](#): 3 or 4 historic mathematical events that happened on each date. There is also a Quotation for the Day.

[Problems from another time](#): Math problems from throughout mathematics history, as well as articles that include problem sets for students.

Hundreds of [articles](#), searchable by topic (algebra, fractal geometry, statistics), type (activity, demonstration, problem set, project), and format (Maple, spreadsheet, JavaScript). Or you can use these [searching tips](#). There are also indices of [article series](#), [award-winning articles](#), and [translations](#).

[Reviews](#) of new and old books, websites, and other teaching aids that focus on utility in the classroom.

A [calendar](#) of meetings and events involving the History of Mathematics.

[Mathematical Treasures](#), a [Portrait Gallery](#), and lots more.

You can become involved in Convergence in several ways:

- Use teaching tools such as one of our projects in your classroom and [tell us about your experiences](#).
- Develop teaching tools and modules for your classroom based on articles in *Convergence* and [share them with us](#).
- Write an [article](#)!
- Become a *Convergence* referee. Please [contact](#) *Convergence* editors Amy Ackerberg-Hastings and Janet Heine Barnett to let them know what topics and types of articles you would prefer to review.

## 2021 KS COLLEGIATE MATHEMATICS COMPETITION RESULTS

Congratulations to Benedictine College for a clear win in this year's competition! Fort Hays (1st team), KU (1st team), and Fort Hays (2nd team) ranked second, third, and fourth with only one and two points separating them, respectively. We hope all participants enjoyed this year's competition, especially after the break forced on us by the pandemic last year, and look forward to returning to our traditional in-person format next year!

---

## NEW SECTION WEBPAGE

All MAA Section webpages are migrating to a new system. The KSMAA webpage was one of the first to undergo the transition. As a result, our section webpage was completely redesigned by our webmaster. In addition, the webpage address has changed and is now

<https://www.kansas.maa.org/>

According to the new MAA policies, some of the items that were on the webpage have been moved to libraries in the KSMAA Community of MAA Connect. These items include archived newsletters and pictures from past KSMAA meetings.

---



[ABOUT](#) [NEWS AND EVENTS](#) [GET INVOLVED](#)

[Join Our Community](#)

**KSMAA IS THE SECTION OF THE MATHEMATICAL ASSOCIATION OF AMERICA THAT SERVES THE STATE OF KANSAS.**

[Join the Community](#) →

## KSMAA SUPPORTS PROJECT NExT FELLOWS

At the Spring 2017 business meeting of the Kansas Section, it was decided that the section officers have the discretion to support travel for Project NExT Fellows up to \$500 per person at the time of application. Department chairs are encouraged, when they have a new hire who would like to be a Project NExT fellow, to contact the section officers to seek this additional travel support to attend Project NExT events at national meetings during their initial fellow year



## CALL FOR NOMINATIONS FOR 2022 MAA KANSAS SECTION AWARD FOR DISTINGUISHED COLLEGE OR UNIVERSITY TEACHING OF MATHEMATICS

Nominations for the 2022 KSMAA Section Award for Distinguished College or University Teaching of Mathematics are now being accepted. The Kansas Section Selection Committee will determine the recipient of the award from those nominated. The awardee will be honored at the Spring 2022 meeting of the Section and will be widely recognized and acknowledged within the Section. The awardee will also be the official Section nominee for the MAA Deborah and Franklin Tepper Haimo Award for Distinguished College or University Teaching of Mathematics. There will be at most three national awardees, each of whom will be honored at the national MAA meeting with a certificate and check for \$1000. A special session at that meeting is devoted to talks by the awardees on aspects of their teaching.

Anyone may make a nomination, but nominations from chairs in departments of mathematical sciences are especially solicited. An outline of the nomination process can be found on the web site

<http://www.maa.org/awards/teachingawards.htm>

We urge you to submit a nomination for the MAA Kansas Section Teaching Award if you have someone eligible and qualified in your department. Even if not selected this year, it is an honor for someone to have been nominated, and your candidate can likely be nominated again in a future year. Your department will receive recognition for its commitment to excellence in teaching, and the work done in preparing a nomination folder for your candidate is a tribute in itself. Self-nomination is not permitted.

(continued on next page)

## CALL FOR NOMINATIONS FOR 2022 MAA KANSAS SECTION AWARDS (CONTINUED)

### Eligibility

College or university teachers who currently teach a mathematical science at least halftime during the academic year in a public or private college or university (from two-year college teaching through teaching at the Ph.D. level) in the United States or Canada. Those on approved leave (sabbatical or other) during the academic year in which they are nominated qualify if they fulfilled the requirements in the previous year.

More than seven years experience in teaching a mathematical science.

Membership in the Mathematical Association of America.

### Guidelines for Nomination

Nominees should

- Be widely recognized as extraordinarily successful in their teaching\*
- Have teaching effectiveness that can be documented
- Have had influence in their teaching beyond their own institution\*\*
- Foster curiosity and generate excitement about mathematics in their students.

\* "teaching" is to be interpreted in its broadest sense, not necessarily limited to classroom teaching. It may include activities such as preparing students for mathematical competitions at the college level such as the Putnam Prize Competition or the Mathematical Contest in Modeling, attracting students to become majors in a mathematical science or to become Ph.D. candidates, working with pre-service or inservice teachers, etc.

\*\* "influence beyond..." can take many forms, including demonstrated lasting impact on alumni, influence on the profession through curricular revisions in college mathematics teaching with wide-ranging impact, influential publications or innovative books concerned with the teaching of college mathematics, etc.

Nominations must be submitted on the enclosed "Nomination Form." Please follow the instructions on that form precisely to assure uniformity in the selection process.

Please email the completed nomination form to

Professor Cynthia Huffman

Chair, Awards Selection Committee

[cjhuffman@pittstate.edu](mailto:cjhuffman@pittstate.edu)

**no later than February 1, 2022.**

Nominations for someone from another Section should be sent to the Secretary of the nominee's Section.

The KSMAA Selection Committee will select the Kansas Section awardee soon after the February 1 deadline. After the selection is made, the nominator and awardee will be encouraged to complete and submit a full nomination packet (see <http://www.maa.org/awards/teachingawards.htm>) in time for consideration for the national award the next year.

We look forward to your participation in this exciting MAA venture of taking substantive action to honor extraordinarily successful teaching. We want to see such teaching recognized at all post-secondary school levels. We depend on you to help us identify those who merit such recognition.

(application form on next page)

**Mathematical Association of America**  
**Award for**  
**Distinguished College or University Teaching of Mathematics**  
**Nomination Form**

PLEASE TYPE

Nominee's Name (First name first): \_\_\_\_\_

College or University Affiliation: \_\_\_\_\_

College or University Address: \_\_\_\_\_

City: \_\_\_\_\_ State: \_\_\_\_\_ Zip: \_\_\_\_\_

Nominee's email address: \_\_\_\_\_

Is the nominee a current member of the Mathematical Association of America? \_\_\_\_\_

Nominee's number of years teaching experience in a mathematical science: \_\_\_\_\_

Has the nominee taught at least half time in a mathematical science during the current academic year or during the previous year if on approved leave or sabbatical? \_\_\_\_\_

In the space below, please briefly describe the unusual personal and professional qualities of the nominee that contribute to his or her extraordinary teaching success.

Name of nominator (First name first): \_\_\_\_\_

Address: \_\_\_\_\_



## KSMAA OFFICERS 2021-2022

**Section Representative:**

**Brian Hollenbeck**  
Emporia State University  
Emporia, KS 66801  
bhollenb@emporia.edu  
(620) 341-5644

**Chairperson:**

**Nickolas Hein**  
Benedictine College  
Atchison, KS 66002  
nhein@benedictine.edu  
(913) 360-7525

**Vice Chair:**

**Pari Ford**  
Bethany College  
Lindsborg, KS 67456  
fordpl@bethanylb.edu  
(785)227-3380, x4322

**Vice Chair-Elect:**

**Cuong Ngo**  
Bethany College  
Lindsborg, KS 67456  
fordpl@bethanylb.edu  
(785) 227-3380

**Treasurer:**

**Qiang Shi**  
Emporia State University  
Emporia, KS 66801  
qshi@emporia.edu  
(620) 341-5452

**Secretary:**

**Jennifer Wagner**  
Washburn University  
Topeka, KS 66621  
Jennifer.wagner1@washburn.edu  
(785)670-3224

**Historian:**

**Tim Flood**  
Pittsburg State University  
Pittsburg, KS 66762  
tflood@pittstate.edu  
(620) 235-4401

**Coordinator of Section Liaisons:**

**Tim Flood**  
Pittsburg State University  
Pittsburg, KS 66762  
tflood@pittstate.edu  
(620) 235-4401

**Public Information Coordinator/  
Newsletter Editor/Webmaster:**

**Cynthia Huffman**  
Pittsburg State University  
Pittsburg, KS 66762  
cjhuffman@pittstate.edu  
(620) 235-4409

**Competition Co-Coordinator:**

**Dionyssi Mantzavinos**  
Department of Mathematics  
University of Kansas  
Lawrence, KS 66045  
mantzavinos@ku.edu  
(785) 864-4324

**Competition Co-Coordinator:**

**Scott Thuong**  
Department of Mathematics  
Pittsburg State University  
Pittsburg, KS 66762  
sthuong@pittstate.edu  
(620) 235-4408



## KSMAA NEWSLETTER

The KSMAA Newsletter is published twice a year; once early in the year and then again in the fall. A link to each newsletter will be sent out via email by the MAA. The newsletters are also archived on the section webpage at <https://www.kansas.maa.org/>.

The newsletter can also be a forum for sharing news or disseminating information to other mathematics departments across the state. If your department has any news to be included in the KSMAA Newsletter, please send it to KSMAA Public Information Coordinator:

**Dr. Cynthia Huffman**  
Pittsburg State University  
Pittsburg, KS 66762  
cjhuffman@pittstate.edu  
(620) 235-4409