

**Kansas Section
of the
Mathematical Association
of America
65 Years
(1915-1980)**

February 1980

**Prepared by
Elaine L. Tatham
Johnson County Community College
College Boulevard at Quivira Road
Overland Park, Kansas 66210**

DEDICATION

This history is dedicated to the following six current members of the Kansas section whose membership in the Mathematical Association of America dates back to 1929 or earlier.

Wealthy Babcock (1923)
The University of Kansas

W.H. Garrett (1915)
Baker University

Thirza Mossman (1921)
Kansas State University

Oscar J. Peterson (1923)
Kansas State College, Emporia

G. Baley Price (1926)
The University of Kansas

Alfred E. White (1915)
Kansas State University

On behalf of these six members, Thirza Mossman and G. Baley Price wrote material for this volume. Their "Reflections" begin on page one.

Reflections by G. Baley Price

Early in the twentieth century E.H. Moore and H.E. Slaught at the University of Chicago led a national movement for the improvement of the teaching of mathematics. As a result of their efforts the Mathematical Association of America was established in December 1915. There were famous teachers of mathematics in Kansas, and there was widespread interest in the problems of teaching mathematics. This interest led, even before the founding of the MAA in 1915, to the establishment of a state organization in Kansas which later became the Kansas Section of the MAA; it was the first Section of the Mathematical Association of America to be organized. It was honored for being the first Section by the publication of a photograph of its members in the *American Mathematical Monthly* in 1916.

A review of the history of the Kansas Section of the MAA provides an appropriate occasion for examining its role today and in the future. The Kansas Section of the MAA is the only state-wide organization devoted to the teaching of mathematics at the undergraduate level, and many of the problems can be solved only at the state level. The problems of teaching mathematics today are overwhelming in their complexity. The curriculum has changed and continues to change; there is much new subject matter to teach and there are many new applications of mathematics. The students have changed and continue to change; in recent years they have fluctuated widely in numbers, character, motivation, and high school preparation--many do not take the mathematics courses in high school that they will need later for their college programs.

ACKNOWLEDGEMENTS

A number of people responded to requests for historical information about the Kansas section. Without their assistance, this volume could not have been prepared. The names of those individuals are shown below.

Harry M. Gehman
SUNY - Buffalo*

S. Thomas Parker
Kansas State University

G. Baley Price
The University of Kansas*

David P. Roselle, Secretary
The Mathematical Association of America

Robert H. Thompson
Washburn University

Alfred B. Willcox, Executive Director
The Mathematical Association of America

The main effort in this first history of the Kansas section was to document officers, meeting dates and locations, keynote speakers and topics. Persons who have supplementary material or corrections should send them to the writer. If enough material is obtained, an expanded version will be developed.

*Emeritus

There is much new educational technology such as films, television, computers, and hand-held calculators to evaluate and employ. There are new methods such as instruction in large sections and self-paced instruction to evaluate and employ. Other problems arise from the growth of two-year and community colleges, which offer both terminal and transfer programs. All of these changes and new developments require attention to the problems of teacher education. Thus the present situation suggests that there is a need--even more than in 1915--for a strong Kansas Section of the MAA, which can call on the resources of the national organization in its efforts to solve local problems. The mathematicians of Kansas should join in supporting the Kansas Section and its efforts; the officers of the Kansas Section should redouble their efforts to provide a vital and timely program for the improvement of the teaching of mathematics in Kansas.

G. Baley Price
November 21, 1979

Reflections by Thirza Mossman

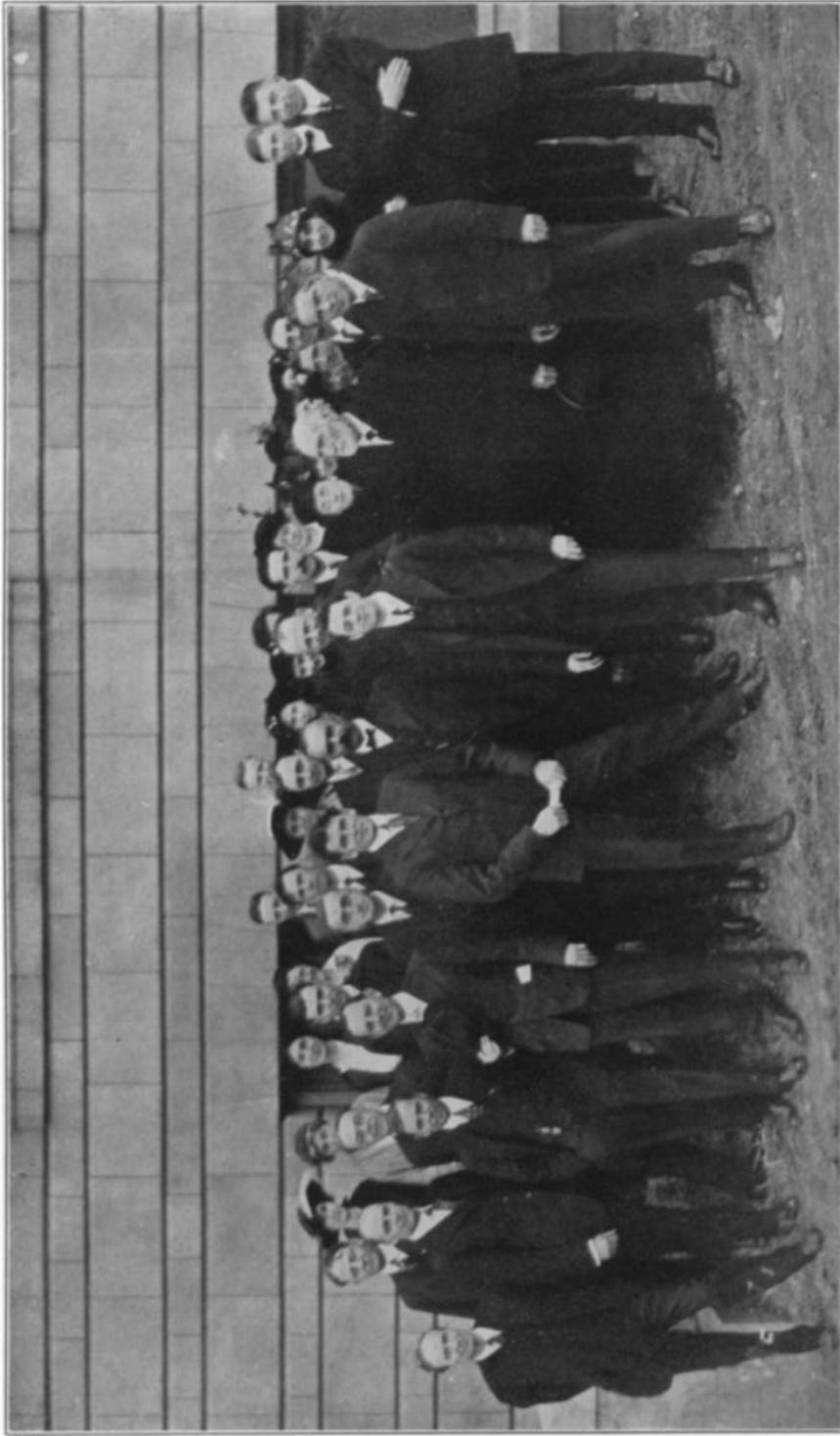
On an obstacle course through the attic I ran across a general program of the 1925-26 meeting of "A.A.A.S. and Associated Societies" at Kansas City, Missouri. At that time these organizations were not too large for combined meetings and we enjoyed opportunities there to meet scientists and to learn of interesting discoveries in their fields.

The mathematics section of the general program involved A.M.S., M.A.A. and Pi Mu Epsilon. M.A.A. offerings were meager and the fact that the A.M.S. program offered only four sections, "Analysis", "Algebra," "Point Sets" and "Geometry, Mechanics and Applied Mathematics" points to the progress that since has been made in newer fields and byways.

Clipped into my program was a leaflet describing various Kansas City theater offerings including Eugene O'Neill's "Desire Under the Elms" playing at the Missouri, "Student Prince" at the Shubert, Charlotte Greenwood in vaudeville at the Orpheum and at the New 12th Street Theater "Burlesque with a Kick". Additional inducements were offered by The Inter-State Stage Lines Company in reduced fares, for instance, round trip between Topeka and Kansas City for \$2.00.

Times have changed!

Thirza Mossman
December, 1979



MEMBERS OF THE KANSAS SECTION OF THE MATHEMATICAL ASSOCIATION OF AMERICA, IN SESSION AT LAWRENCE, KANSAS, MARCH 18, 1916.

Courtesy of The Mathematical Association of America, *The American Mathematics Monthly*,
vol. 23, 1916, p. 165.

The Kansas Section
1915-1980

The beginning year 1915

A movement was initiated during the spring of 1915 for the improvement of the teaching of collegiate mathematics. The first meeting of The Kansas Association of Teachers of Collegiate Mathematics was held November 12, 1915, at the Topeka High School Building. According to the program, the following three people were the members of the organization committee that planned the meeting.

Professor A.J. Hoare
Fairmount College*

Dr. Solomon Lefschetz**
The University of Kansas

Professor T.J. Mergendahl
Emporia College

The meeting included a discussion on the development of a permanent organization. Professor W.A. Harshbarger, Washburn College, gave a paper "What For the Mathematical Student Beyond Calculus." The discussion following the presentation of the paper was led by Professor B.L. Remick, Kansas State Agricultural College, and Professor W.H. Garrett, Baker University.

The national organization, The Mathematical Association of American (MAA), was itself organized at Columbus, Ohio, on December 30, 1915. There were 1028 charter members of the MAA and 37 were from Kansas. Professor Ulysses Grant Mitchell, The University of Kansas, was the delegate from Kansas--the first body to apply for admission as a section of the MAA.

*Wichita State University

**Went to Princeton University in 1924

The year 1916

The second meeting of the Kansas Mathematical Association (Kansas section of the Mathematical Association of America) was held March 18, 1916, at the University of Kansas. A photograph of the members in attendance is shown on the next page. The names of those present are listed below together with institutions they represented:

University of Kansas: J.N. Van der Vries, C.H. Ashton,
U.G. Mitchell, H.E. Jordan,
J.J. Wheeler, S. Lefschetz,
A.W. Larson, K.L. Holzinger,
L.L. Steimley, C.A. Nelson,
J.M. Jacobs, P.W. Harnley

Kansas State Agricultural
College: B.L. Remick, A.E. White,
W.T. Stratton, H.E. Porter

Kansas State Normal: Theodore Lindquist
Fairmount College: A.J. Hoare
College of Emporia: T.E. Mergendahl
Washburn College: W.A. Harshbarger, Mary Newson
Baker University: W.H. Garrett
McPherson College: A.B. Frizell
Bethel College: D.H. Richert
Friends University: O.W. Dueker
Campbell College: T.L. Bouse
Kansas City, Kansas, High
School: Elizabeth G. Flagg, Emma Hyde,
Lucy Dougherty

Professor U.G. Mitchell reported on the MAA organization meeting in Columbus, Ohio. A paper, "Geometry for College Juniors and Seniors," was given by Professor J.N. Van der Vries, University of Kansas. The discussion of the paper was led by Mary W. Newson, Washburn College.

There was a second meeting held during 1916. Records show that meeting held November 10, 1916, at the Topeka High School as the third section meeting. Details about the program could not, however, be located.

The year 1917

The fourth meeting of the Kansas Section of the Mathematical Association of America was held March 17, 1917, at the University of Kansas. Professor W.H. Andrews, Kansas State Agricultural College, gave a paper on "The Content of Freshman Algebra." Three other papers were given on algebra courses for college juniors and seniors. They were as follows:

For Students Preparing to Teach
Professor U.G. Mitchell, University of Kansas

For Students Preparing to do Research Work
Professor W.H. Garrett, Baker University

For Students Preparing to Enter Applied Sciences
Professor A.R. Crathorne, University of Illinois

The program for the November 9, 1917, meeting was the first to show only the heading, Kansas Section of the Mathematical Association of America. Previous programs had also shown the heading, Kansas Mathematical Association. The meeting was held at the Topeka High School Building. Professor C.H. Ashton, University of Kansas, gave a paper "Content of a First Five Hour Course in Calculus." The discussion was led by Professor A.J. Hoare, Fairmount College, and Professor J.A.G. Shirk, State Manual Training Normal School. A paper, "Use of the Graph in Calculus," was given by Professor W.A. Harshbarger, Washburn College. Professor S. Lefschetz, University of Kansas, gave a paper, "Intersections of Circles and Conics."

The years 1918-1919

No meetings were held because of the war.

The year 1920

The sixth meeting of the Kansas Section was held April 3, 1920,

at Kansas State Agricultural College in Manhattan. There were 19 persons in attendance and 15 were members of the Association. There were six papers given by Professors U.G. Mitchell, Mary W. Newson, W.H. Garrett, C.H. Ashton, E.B. Stouffer and W.T. Stratton.

The year 1921

The seventh meeting of the Kansas Section was held January 22, 1921, at the Topeka High School. The morning sessions were joint meetings with the Kansas Association of Mathematics Teachers. The afternoon session had four papers on the following topics: Mathematics and Statistics, Hyperbolic Functions, A Problem in Calculus, and Division of Credit between College Algebra, Trigonometry, Analytics and Calculus.

The year 1922

The eighth meeting was held January 21, 1922, at the Topeka High School Building. A joint meeting with the Kansas Association of Mathematics Teachers (KAMT) was held during the morning. Professor C.F. Lewis, Kansas State Agricultural College, gave a paper "What Use Can Be Made of the Slide Rule and Logarithms Before Trigonometry?" During the afternoon, the following five papers were given: History and Development of Trigonometry, Mathematics in Europe, Mathematics of Insurance, Mathematical Determination of Orbits, and Content of a Course in College Mathematics for Students Who Take No Other Mathematics Courses.

The year 1923

The ninth meeting was on January 20, 1923, at the Topeka High School Building. The three morning sessions were held jointly with the KAMT. Afternoon papers were given by Guy W. Smith, Pius Pretz, Thirza Mossman, Wealthy Babcock, and T.B. Henry.

The year 1924

The Western Passenger Association provided special round trip train rates to the February 2, 1924, meeting at the Topeka High School. The morning joint meeting with the KAMT featured four papers given by Ina E. Holroyd, Emma Hyde, Minnie Dingee and Inez Morris. One of those papers was on the topic "Mathematics in the Education of Girls and Women."

The afternoon session consisted of three papers given by Professor R.H. Carpenter from Iola Junior College, W.T. Stratton from Kansas State Agricultural College and S. Lefschetz from the University of Kansas.

The years 1925-29

A meeting was held February 7, 1925, at the Topeka High School, but no further information could be located. The 1926 meeting was merged with the Tenth Annual meeting of the MAA held on December 30-31, 1925, at the junior college in Kansas City, Missouri. There was also a joint meeting with the KAMT on February 6, 1926, but no details were found.

The February 5, 1927, and February 4, 1928, meetings were both held at the Topeka High School, but no program information was located.

The February 2, 1929, meeting at the Topeka High School featured a report of the 1928 Mathematical Congress at Bologna given by E.B. Stouffer, University of Kansas. The luncheon speaker was U.G. Mitchell who gave a paper "Mathematics and Poetry." Professor J.O. Hassler, University of Oklahoma, gave a paper on "The Value of Mathematical History to the Teacher and the Pupil." Six other papers were also presented.

The years 1930-39

The February 15, 1930, meeting was held at the Topeka High School

and included a paper "An Unusual Triple Conjunction of Jupiter and Saturn" by W.H. Garrett.

The January 24, 1931, meeting was held with the KAMT at the Topeka High School. Speakers included E.R. Breslich, University of Chicago, and John A. Swenson, Wadleigh High School in New York City.

The February 13, 1932, meeting was held with the KAMT at the Topeka High School. Three papers were given in the afternoon and the morning sessions were held with the KAMT. The February 11, 1933, meeting was held with the KAMT at the Topeka High School. W.H. Garrett gave two papers-- "Our Expanding Universe" and "Homer Myers--An Appreciation." Ulysses Grant Mitchell reported on the 1932 International Congress of Mathematicians in Zurich.

According to Harry M. Gehman, Ellis Bagley Stouffer served as Vice President of the MAA during 1933. Although no dates or confirmation was received, both Ulysses Grant Mitchell and Charles Hamilton Ashton may have served on the MAA Board of Trustees.

The meetings for 1934-36 were held with KAMT at the Topeka High School. The exact dates were March 17, 1934; March 16, 1935; and March 14, 1936.

The 1937 joint meeting with the KATM was held at the Allis Hotel in Wichita on April 3. William Betz from Rochester, New York, spoke on "Mathematics as a Universal and Permanent Element in Education." The 1937 program also shows the Kansas Association of Teachers of Mathematics (KATM) rather than KAMT for the first time.

The 1938 meeting was held with the KATM on April 2 at Kansas State Teachers College at Pittsburg. The keynote speaker, was A.R. Congdon from the University of Nebraska, who gave two papers. One was "Mathematical Requirements for High School Graduation and College Entrance."

The April 1, 1939, meeting with the KATM was held at the Topeka High School. Maurice L. Hartung, University of Chicago, spoke on "Mathematics in Progressive Education." A discussion was held on whether engineering and liberal arts courses were the same or different from the standpoints of subject matter and administration. An algebra course for 3, 5, or 6 hours was presented by O.J. Peterson.

The years 1940-49

The March 30, 1940, joint meeting with the KATM was held at the University of Wichita. The meeting focused on the Kansas Mathematical Tests and how the results applied to college courses.

The April 4-5, 1941, joint meeting with the KATM was held at Kansas State College in Manhattan. G. Baley Price presided over a meeting which included a discussion on "Mathematics and the Junior Colleges." A symposium on Science and National Preparedness included William L. Hart, University of Minnesota, and Alexander S. Langsdorf, Washington University in St. Louis.

The March 27-28, 1942 joint meeting with the KATM was held at Fort Hays Kansas State College. The influence of the war was seen again on the papers presented. Daniel T. Sigley, Kansas State College, gave a paper "Mathematics in the Armed Forces."

Almost all the papers at the April 10, 1943 meeting with KATM at the University of Kansas related to the War. Topics

included "Mathematics in War", "Mathematics in Air Navigation", "Cryptography--Secret Writing", "Adjustments in Mathematics to the Impact of War", and "The War Effort and Junior High School Mathematics". The April 15, 1944, meeting with KATM at Washburn University had nine papers related to the war. Due to restrictions on travel, there was no meeting during 1945.

The joint meeting with KATM during 1946 was held April 13 at Kansas State Teachers College of Emporia. Guy W. Smith reported on the Board of Governors meeting. Papers included "Mathematics for Women" by Sister M. Helen Sullivan, "Some Mathematical Considerations of Supersonic Flight" by C.B. Tucker, and "Application of Mathematical Statistics to Agricultural Experimentation" by H.C. Fryer.

The keynote speaker at the 1947 meeting was Harold Fawcett, Ohio State University, who spoke on "The Development of Teachers of Mathematics." The meeting held April 19 at the University of Wichita was held jointly with the KATM.

A panel discussion was held on "Mathematics and the Development of Civilization" at the April 10, 1948, meeting at Mount St. Scholastica College. Professor C.V. Newsom, Oberlin College, spoke on "Establishing Our Mathematical Perspective."

Kansas State College at Manhattan hosted the April 2, 1949, meeting. The keynote speaker was E.P. Northrop, The University of Chicago, who spoke on "The Role of Mathematics in General Education." R.G. Sanger was elected as the first Kansas section governor to serve from 1949-52.

The years 1950-59

The 1950 meeting was held April 22 at Kansas State Teachers

College, Pittsburg. Another indication of participation in meetings by two year college staff was shown by the paper given by Henrietta Courtright, Arkansas City Junior College.

The University of Kansas was the site for the April 7, 1951, meeting. Dr. John H. Curtis from the National Applied Mathematics Laboratories of the National Bureau of Standards spoke on "Some Novel Methods for Estimating the Eigenvalues of Linear Operators."

Curriculum was a major topic at the March 29, 1952, meeting at Bethany College. John R. Mayor, The University of Wisconsin, was the invited speaker on the topic "Mathematics in the Secondary Schools."

The word, topology, appeared on the April 11, 1953, program when J.L. Kelley, University of Kansas, gave a paper "Topology for Undergraduates." The meeting at Washburn University included a talk by Dean Norman Royall, Jr., from The University of Kansas City on the topic "On a Certain Historical Debt which Society Owes to Mathematicians."

The March 27, 1954, meeting was held at Baker University. Martin Goland, Midwest Research Institute, spoke on "Recent Trends in Mathematics." W.H. Garrett, Baker University, gave a talk as the luncheon speaker on "Fifty Years: Then and Now."

The Training Director for Boeing Airplane Company, Lynn Whiteside, spoke on "Empirical Formula for Survival" at the March 26, 1955 meeting at Fort Hays Kansas State College. Guy W. Smith gave a paper "A Problem of an Artist." During 1955, G. Baley Price was elected to serve as a Vice President of the MAA for 1955 and 1956. Members from Lawrence and Topeka spent all night and part of the next day trying to get to Hays by train. A heavy snowstorm interfered with the Union Pacific's train schedule.

Burton W. Jones, University of Colorado, was the invited speaker at the April 21, 1956, meeting at the University of Wichita. His topic was "Observations on English Schools and Colleges."

The April 13, 1957, meeting was at The University of Kansas. A paper on "The Use of Television in the Teaching of Collegiate Mathematics" was given by Ross R. Middlemiss, Washington University. G. Baley Price assumed the position of MAA President in 1957 and his term continued through 1958.

The influence of computers was evidenced on the April 12, 1958 program. A paper was given by Urs W. Hochstrasser, University of Kansas, on the topic "Are Computing Machines Replacing Mathematicians." The meeting was at Kansas State Teachers College, Emporia. Dean Albert E. Meder, Jr., from Rutgers University was the featured speaker on the topic "Modern Mathematics and its Role in Secondary Education."

The April 11, 1959, meeting was held at Marymount College in Salina. Burton W. Jones was the keynote speaker and gave a paper "A Method for Solving Some Quadratic Diophantine Equations." G. Baley Price assumed a six-year term on the MAA Board of Governors as a former MAA President.

The years 1960-69

The April 30, 1960, meeting was held at Kansas State College of Pittsburg. Magnus R. Hestenes from the University of California at Los Angeles was the keynote speaker. His address was "Some Properties of Matrices." Wendy J. Robertson gave a paper "The Teaching of Mathematics at British Universities." John G. Kemeny, Dartmouth College, spoke on "Recommendations

for the Training of Teachers of Mathematics" at the April 15, 1961, meeting at Ottawa University.

The April 28, 1962, meeting was at Bethel College. Leonard M. Blumenthal, University of Missouri, spoke on "The Golden Age of Mathematics--Today." Larry Nelson, Kansas State University, gave a talk "A Glimpse of Turing Machines through the Busy Beaver Game."

Sterling college hosted the April 27, 1963, meeting. Richard V. Andree, University of Oklahoma, gave an address "Computers Today." Marjorie French, the national teacher of the year, gave the luncheon address "Miscellanea, Mathematical and Otherwise." She described her trip to Washington to receive the honor bestowed on her.

Robert C. Fisher, Ohio State University, gave the keynote address, "Coordinates in Geometry," at the April 18, 1964, meeting at Kansas State University. In January 1964, G. Baley Price was elected to the MAA Finance Committee and he was elected to his fifth term in January 1980.

The April 10, 1965, meeting was at Topeka West High School. Alfred B. Willcox, Amherst College in Massachusetts, spoke on the topic "Upgrading the General College Curriculum in Mathematics" and "Pre-Graduate Training."

The University of Kansas hosted the March 26, 1966, meeting Shirley Hill, University of Missouri at Kansas City, spoke on "Mathematics in Today's Elementary Schools." Gail S. Young, Tulane University, gave a paper "The CUPM Report on a General Curriculum in Mathematics for Colleges."

The April 22, 1967, meeting was at Fort Hays Kansas State College. Stanley J. Bezuszka, Boston College, gave the keynote address "The Structure of Mathematics."

Marymount College hosted the March 23, 1968, meeting. Carolyn Eisele, Hunter College, gave two papers "Mathematics is One of the Humanities" and "Charles S. Pierce and the Mathematics of the Nineteenth Century." John Jewett, Oklahoma State University, gave a paper "The CUPM Report, Qualifications for a College Faculty in Mathematics."

The March 28-29, 1969, meeting was at Wichita State University. George Springer, Indiana University, gave the Friday evening address "Preparing Mathematics Teachers for the Future." Dr. Springer's address on Saturday was "Quasi-Conformal Mapping." The 1969 meeting was the first to indicate the viewing of films. The programs also showed that an amendment was proposed that another section officer, Associate-Chairman for Junior Colleges, be appointed. The date for passing that amendment is not clear and no one was appointed to that office until 1975.

The years 1970-79

Kansas State Teachers College of Emporia hosted the March 13, 1970, meeting. Arthur Bernhart, Oklahoma University, gave the opening address "Graph Theory and Color Problems." R. H. Bing, University of Wisconsin, spoke on "The Elusive Fixed Point Property." Several films were shown. The 1970 meeting was the first to show a special session for two year college faculty. Loren L. French, Kansas City, Kansas Community College, presided over a panel discussion on "How Can the Junior College Mathematics Curriculum Bridge the Gap--High School to College?" John Maxfield, Kansas State University; Marion Emerson, Kansas State Teachers College; Carol Bridges, Cowley County Community College; and Gayle A. Krause, Butler County Community College were on the panel.

Hutchinson Community College hosted the March 26-27, 1971, meeting. Donovan Johnson, University of Minnesota, gave the Friday evening address "Excursions in Mathematics Not in Our Textbooks." Two students, Perry Krehbiel and John DeLay, from Bethel College gave a preliminary report on "Famous Mathematicians from Kansas."

The March 24-25, 1972, meeting was at Washburn University. The Friday evening address was given by John G. Wetzel, University of Illinois, on the topic "Dissections of a Tetrahedron: An Example of Problem Solving." His Saturday topic was "Worm Problems."

Kansas State University hosted the March 24, 1973, meeting. Patrick Suppes, Stanford University, spoke on "Mathematical Models for Languages." Roger C. Entringer, University of New Mexico, spoke on "Some Unsolved Problems in Combinatorics and Graph Theory."

The March 23, 1974, meeting at Ottawa University coincided with a heavy snow that made many participants late or unable to get to Ottawa. Kansas, as usual, had a dramatic change in weather during the day and the sun was shining by the time people were preparing to leave. Ignacy I. Kotlarski, Oklahoma State University, spoke on "Characterizations of Probability Distributions."

The University of Kansas hosted the March 22, 1975 meeting. David Roselle, Secretary of the MAA, spoke on "Some Special Combinatorial Sequences."

Henry O. Pollak, MAA President, spoke on the topic "The Loop Switching Addressing Problem--On How to Embed an Arbitrary Graph

in a Cube" during the morning at the April 2, 1976 meeting. His afternoon address was "On the Relationship between Applications of Mathematics and the Teaching of Mathematics." Fort Hays Kansas State College hosted the meeting.

Tabor College hosted the April 2, 1977, meeting. Calvin A. Lathan, Monroe Community College, Rochester, New York, spoke on "Small Group Instruction: An Alternative to Lecture-Discussion." Lathan was editor of the Two Year College Mathematics Journal. Franz E. Hohn, University of Illinois at Urbana-Champaign, spoke during the afternoon on "The Role and Training of Mathematicians in Modern Society." Thirza A. Mossman, a member of the Kansas section since 1921, gave a paper "Note on the Genus of a Knot."

The April 1, 1978, meeting was at Wichita State University. Errett Bishop, University of California at San Diego, spoke on the topics. "Brauer's Contribution to the Philosophy of Mathematics" and "Beyond Brauer."

Walter Mientka, University of Nebraska at Lincoln, was the keynote speaker at the April 7, 1979, meeting at Johnson County Community College. Dr. Mientka's topics were "Arithmetic Problems in Theory of Numbers" and "The Number of Solutions of a Set of Divisibility Conditions." Four films were shown with each film available for three viewing times. Two high school students, Teresa Stroud and Karen Stuhlman from Notre Dame de Sion in Kansas City, Missouri, gave papers describing their mathematics entries in the 1978 Kansas City Science Fair. Phillip Childress, Kansas Junior Academy of Science, described how he encouraged student participation in science fairs.

The years 1980-89

Kansas State University is the host for the April 11-12, 1980, meeting. Richard V. Andree, University of Oklahoma, and Dorothy L. Bernstein, MAA President, have agreed to be speakers.

Supplementary Observations

The Kansas section of the MAA and the Kansas Association of Teachers of Mathematics have had joint meetings since 1929. Programs also showed that joint meetings were also held from 1921-24.

Chairmen of the section have been from the following 19 colleges.

Baker University
Bethany College
Bethel College
Fort Hays Kansas State College
Friends University

Johnson County Community College
Kansas State College, Emporia
Kansas State College, Pittsburg
Kansas State University
Marymount College

Mount St. Scholastica College
Ottawa University
St. Benedict's College
Sterling College
Southwestern

Tabor College
University of Kansas
Washburn University
Wichita State University

REFERENCES

Price, G. Baley. *History of the Department of Mathematics of The University of Kansas, 1866-1970*. Kansas University Endowment Association, The University of Kansas, Lawrence, Kansas, 1976.

Programs and papers in the Kansas Section secretarial files.

Issues of *The American Mathematical Monthly*.

Letters received from individuals cited in the acknowledgements. Those persons reviewed material they had access to and documented the information in letter form.

Note.--Some material compiled earlier by other section members did not agree with the official files and programs. In such cases, material from the official records were used.

KANSAS SECTION CHAIRMEN

1915-16	A.J. Hoare Fairmount College
1916-17	A.J. Hoare Fairmount College
1917-18	B.L. Remick Kansas State Agricultural College
1918-20	W.A. Harshbarger Washburn College
1920-21	W.H. Garrett Baker University
1921-22	James Abraham Garfield Shirk State Manual Training Normal School
1922-23	Alfred E. White Kansas State Agricultural College
1923-24	Theodore Lindquist Kansas State Normal School
1924-25	John Jefferson Wheeler University of Kansas
1925-27	W.H. Garrett Baker University
1927-28	Ulysses Grant Mitchell University of Kansas
1928-29	Homer S. Myers Southwestern
1929-30	Charles Hamilton Ashton University of Kansas
1930-31	Emma Hyde Kansas State Agricultural College
1931-32	John Jefferson Wheeler University of Kansas
1932-33	Oscar J. Peterson Kansas Teachers College, Emporia
1933-34	Rodney W. Babcock Kansas State College

KANSAS SECTION CHAIRMEN

1934-35	Guy W. Smith University of Kansas
1935-36	W.T. Stratton Kansas State College, Manhattan
1936-37	R.G. Smith Kansas State Teachers College, Pittsburg
1937-38	W.G. Warnock Fort Hays Kansas State College
1938-39	Charles B. Tucker Kansas State Teachers College, Emporia
1939-40	Cecil B. Read University of Wichita
1940-41	G. Baley Price University of Kansas
1941-42	Carl V. Bertsch Southwestern
1942-43	C.F. Lewis Kansas State College, Manhattan
1943-44	Paul Eberhart Washburn University
1944-46	Edison Greer University of Kansas
1946-47	Charles A. Reagan Friends University
1947-48	Sister M. Helen Sullivan Mount St. Scholastica College
1948-49	R.G. Sanger Kansas State College, Manhattan
1949-50	R.G. Smith Kansas Teachers College, Pittsburg
1950-51	Lewis M. Reagan Wichita University
1951-52	Anna Marro Bethany College
1952-53	Paul M. Young Kansas State College, Manhattan

KANSAS SECTION CHAIRMEN

1953-54	W. Calvin Foreman Baker University
1954-55	Emmet C. Stopher Fort Hays Kansas State College
1955-56	Ferna E. Wrestler University of Wichita
1956-57	William R. Scott University of Kansas
1957-58	Lester E. Laird Kansas State Teachers College, Emporia
1958-59	Pius S. Pretz St. Benedict's College
1959-60	J.D. Haggard Kansas State Teachers College, Pittsburg
1960-61	W. David Bemmels Ottawa University
1961-62	Leonard E. Fuller Kansas State University
1962-63	Arnold M. Wedel Bethel College
1963-64	Robert H. Thompson Sterling College
1964-65	Laura Z. Greene Washburn University
1965-66	Gilbert Ulmer University of Kansas
1966-67	Jimmy Rice Fort Hays Kansas State College
1967-68	Sister Mary Paul Buser Marymount College
1968-69	Jeneva J. Brewer Wichita State University
1969-70	Donald L. Bruyr Kansas State Teachers College, Emporia
1970-71	James Ewbank St. Benedict's College

KANSAS SECTION CHAIRMEN

1971-72	Harold Thomas Kansas State College, Pittsburg
1972-73	Richard E. Shermoen Washburn University
1973-74	John Marr Kansas State University
1974-75	Peter Flusser Ottawa University
1975-76	Russell Bradt University of Kansas
1976-77	Elton Beougher Fort Hays Kansas State College
1977-78	Frank Brenneman Tabor College
1978-79	John Hutchinson Wichita State University
1979-80	Elaine L. Tatham Johnson County Community College

KANSAS SECTION VICE-CHAIRMEN

1915-16	Solomon Lefschetz University of Kansas
1916-17	Solomon Lefschetz University of Kansas
1917-18	T.E. Mergendahl College of Emporia
1920-21	James Abraham Garfield Shirk State Manual Training Normal School
1921-22	Emma Hyde Kansas State Agricultural College
1922-23	Theodore Lindquist Kansas State Normal School
1923-24	H.G. Titt Fairmount College
1924-25	Lucy Dougherty Kansas City Junior College
19??-27	W.T. Stratton Kansas State Agricultural College
1927-28	Homer S. Myers Southwestern
1928-29	Charles Hamilton Ashton University of Kansas
1929-30	Emma Hyde Kansas State Agricultural College
1930-31	John Jefferson Wheeler University of Kansas
1931-32	Oscar J. Peterson Kansas Teachers College, Emporia
1932-33	W.A. Harshbarger Washburn College
1933-34	Guy W. Smith University of Kansas
1934-35	W.T. Stratton Kansas State College, Manhattan
1935-36	R.G. Smith Kansas State Teachers College, Pittsburg

KANSAS SECTION VICE-CHAIRMEN

1936-37	W.G. Warnock Fort Hays Kansas State College
1937-38	Charles B. Tucker Kansas State Teachers College, Emporia
1938-39	Cecil B. Read University of Wichita
1939-40	G. Baley Price University of Kansas
1940-41	Carl V. Bertsch Southwestern College
1941-42	C.F. Lewis Kansas State College, Manhattan
1942-43	Paul Eberhart Washburn University
1943-44	Edison Greer Beech Aircraft Corporation
19??-46	Clyde T. McCormick
1946-47	Sister M. Helen Sullivan Scholastica College
1947-48	R.G. Sanger Kansas State College, Manhattan
1948-49	R.G. Smith Kansas State Teachers College, Pittsburg
1949-50	Lewis M. Reagan Wichita University
1950-51	Anna Marm Bethany College
1951-52	Paul M. Young Kansas State College, Manhattan
1952-53	W. Calvin Foreman Baker University
1953-54	Emmett C. Stopher Fort Hays Kansas State College
1954-55	William R. Scott University of Kansas

KANSAS SECTION VICE-CHAIRMEN

1955-56	William R. Scott University of Kansas
1956-57	Lester E. Laird Kansas State Teachers College, Emporia
1957-58	Pius S. Pretz St. Benedict's College
1958-59	J.D. Haggard Kansas State Teachers College, Pittsburg
1959-60	W. David Bemmels Ottawa University
1960-61	Leonard E. Fuller Kansas State University
1961-62	Arnold M. Wedel Bethel College
1962-63	Robert H. Thompson Sterling College
1963-64	Laura Z. Greene Washburn University
1964-65	Gilbert Ulmer University of Kansas
1965-66	Jimmy Rice Fort Hays Kansas State College
1966-67	Sister Mary Paul Buser Marymount College
1967-68	Jeneva Brewer Wichita University
1968-69	Donald L. Bruyr Kansas State Teachers College, Emporia
1969-70	James Ewbank St. Benedict's College
1970-71	Harold Thomas Kansas State College, Pittsburg
1971-72	Richard E. Shermoen Washburn University
1972-73	John Marr Kansas State University

KANSAS SECTION VICE-CHAIRMEN

1973-74	Peter Flusser Ottawa University
1974-75	Russell N. Bradt University of Kansas
1975-76	Elton Beougher Fort Hays Kansas State College
1976-77	Frank Brenneman Tabor College
1977-78	John Hutchinson Wichita State University
1978-79	Elaine Tatham Johnson County Community College
1979-80	S. Thomas Parker Kansas State University

KANSAS SECTION COMMUNITY COLLEGE REPRESENTATIVES

1975-76	Elaine L. Tatham Johnson County Community College
1976-77	Kay Dundas Hutchinson Community College
1977-78	Nelda Cuppy Allen County Community College
1978-79	Carl Lindsey Johnson County Community College
1979-80	Douglas Proffer Johnson County Community College

KANSAS SECTION SECRETARY/TREASURERS

1915-17	T.E. Mergendahl Emporia College
1917-18	John Jefferson Wheeler University of Kansas
1977-20	H.E. Jordan
1920-22	Ellis Bagley Stouffer University of Kansas
1922-27	Ulysses Grant Mitchell University of Kansas
1927-42	Lucy T. Dougherty Kansas City Junior College
1942-50	Anna Marm Bethany College
1950-56	Laura Z. Greene Washburn University
1956-67	Helen Kriegsman Kansas State Teachers College, Pittsburg
1967-68	Lyle J. Dixon Kansas State University
1968-73	Margaret E. Martinson Washburn University
1973-79	Ellen Veed Fort Hays Kansas State College
1979-80	Robert H. Thompson Washburn University

KANSAS SECTION GOVERNORS

1949-52	R.G. Sanger Kansas State College, Manhattan
1952-55	G. Baley Price University of Kansas
1955-58	Cecil B. Read University of Wichita
1958-61	Ronald G. Smith Kansas State Teachers College, Pittsburg
1961-64	Paul Eberhart Washburn University
1964-67	Calvin Foreman Baker University
1967-70	Russell N. Bradt University of Kansas
1970-73	Arnold M. Wedel Bethel College
1973-76	Harold Thomas Kansas State College of Pittsburg
1976-79	Richard E. Shermoen Washburn University
1979-82	John J. Hutchinson Wichita State University